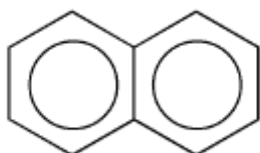


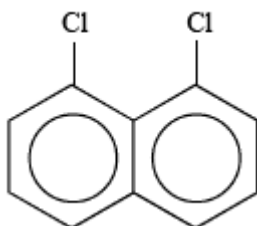
**CHEM 245 Fall 2009
PROBLEM SET II**

1. Determine the point groups for the following molecules.
2. Which ones are NOT chiral? Why?
3. Which ones are NOT polar? Why?

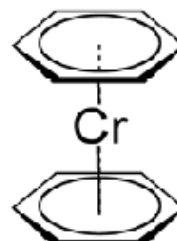
a) Napthalene



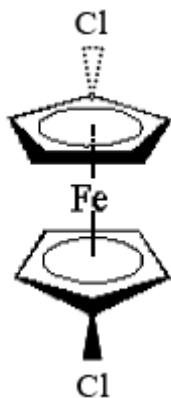
b) 1,8-Dichloronapthalene



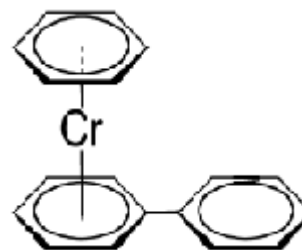
c) Dibenzenechromium



d) 1, 1'-Dichloroferrocene



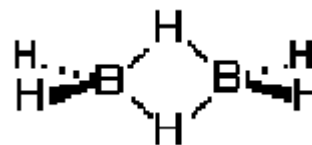
e)



f) Cyclohexane (chair)



g) Diborane



h) Number 96 (font: Times New Roman)